



## Installing the Support Bracket for the Lathe Shield

Follow these instructions for installing the support bracket on the carriage of the Mark V.

### Tools Needed:

Pencil  
Punch  
Hammer  
Variable Speed Drill  
#17 drill bit (provided)  
Medium Phillips Screwdriver

1. Make sure the equipment is turned off and unplugged.
2. Hold the support bracket in position as in Fig. 1. Make sure the beveled end of the support bracket faces toward the Lathe Shield's for bracket, as shown in Fig. 2.



Fig. 1



Fig. 2

3. Use a pencil to mark two drill holes, as in Fig. 3.



Fig. 3

4. Use a punch and hammer to make an indentation on each pencil mark, as seen in Fig. 4.



Fig. 4

5. Make a depth stop on the drill bit by wrapping a piece of masking tape around the drill bit no further than 1/4" from the tip of the bit.

### Warning

**Before drilling, make sure the Mark V is turned off and unplugged.**

Also, drill only deep enough to penetrate through the carriage's outer wall. Never drill deeper than 1/4". Drilling deeper than 1/4" could result in damaging internal workings of the equipment.

6. Use a variable speed drill and the drill bit provided to drill the two holes. Make sure the drill bit is always perpendicular so the holes will be straight. See Fig. 5.

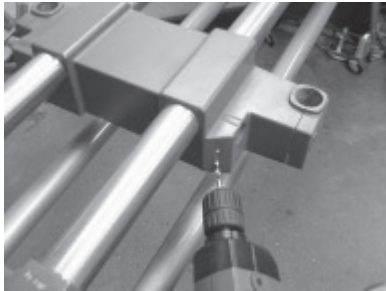


Fig. 5

7. Align the support bracket with the holes. Make sure the notched end of the “shoe” (the raised portion) is pointed toward the Lathe Shield’s U-clamp, when it is installed.

8. Place a lock washer on each self-tapping screw.

9. Hand start the two self tapping screws (with the lock washers) through the support clamp and into the holes.

10. Use a medium Phillips screwdriver to tighten the self-tapping screws. See Fig. 6.



Fig. 6



**Remember not to over-tighten the self-tapping screws. Over-tightening them could strip their heads.**

11. Install the Lathe Shield by sliding its U-clamp in the support bracket, as shown in Fig. 7.

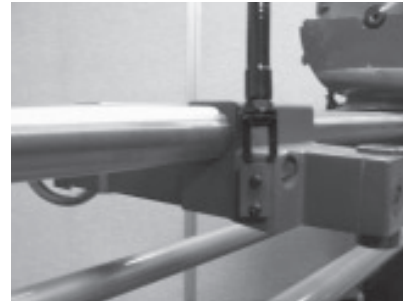


Fig. 7

12. Fig. 8 shows the installed Lathe Shield.

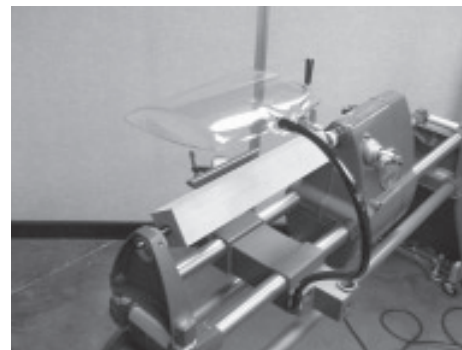


Fig. 8

## NOTE

If you have any questions or comments, please call our Customer Service Department TOLL-FREE at 1-800-762-7555, drop us an e-mail at [techsupport@shopsmith.co](mailto:techsupport@shopsmith.co), visit our website at [www.shopsmith.com](http://www.shopsmith.com), or write to us at:

Shopsmith, Inc.  
Attn: Customer Service Technical Dept.  
6530 Poe Avenue  
Dayton, Ohio 45414

